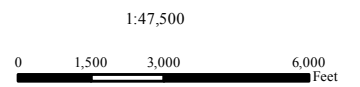
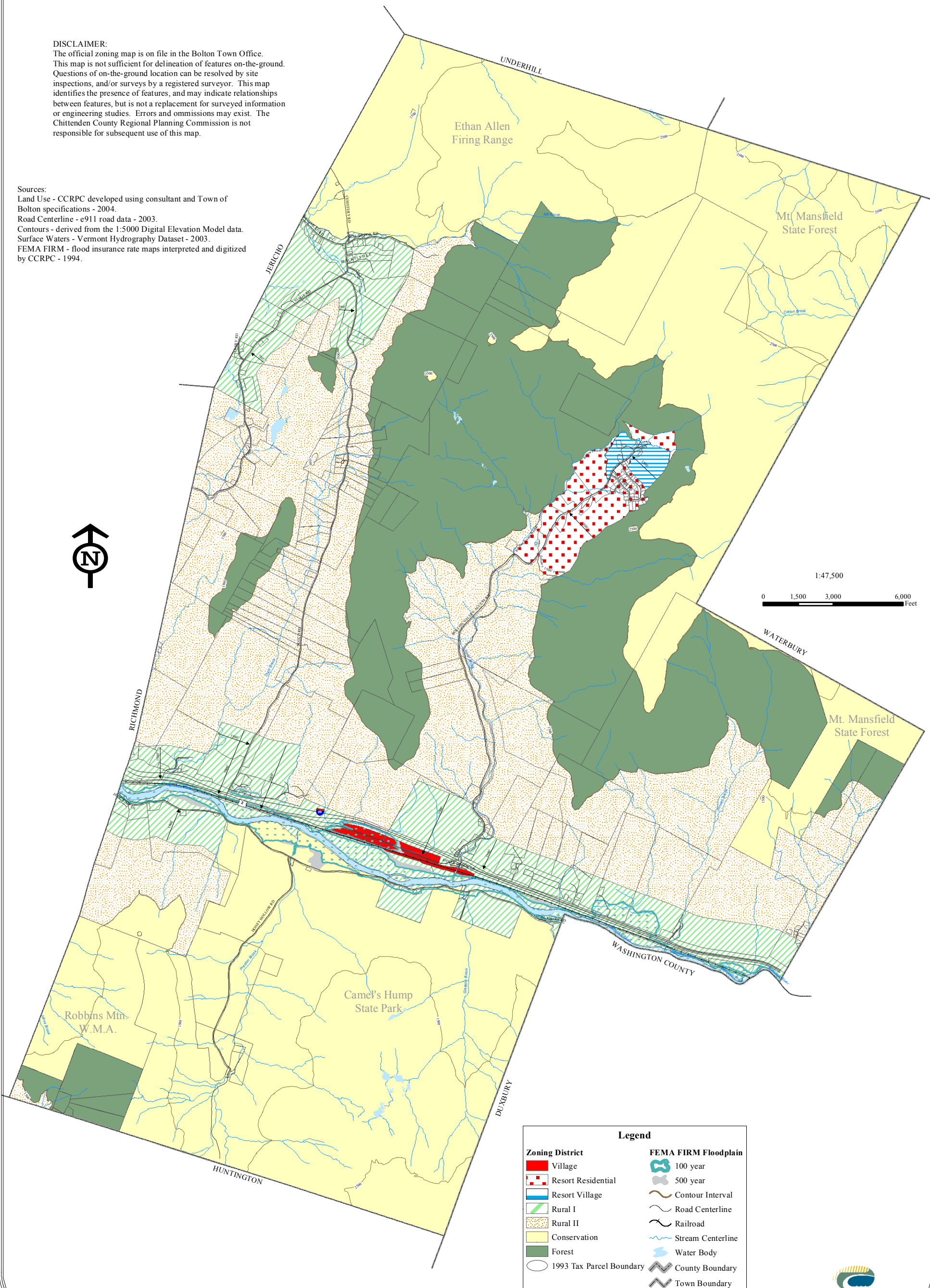


Zoning Bolton Vermont Adopted on January 5, 2005

DISCLAIMER:
The official zoning map is on file in the Bolton Town Office. This map is not sufficient for delineation of features on-the-ground. Questions of on-the-ground location can be resolved by site inspections, and/or surveys by a registered surveyor. This map identifies the presence of features, and may indicate relationships between features, but is not a replacement for surveyed information or engineering studies. Errors and omissions may exist. The Chittenden County Regional Planning Commission is not responsible for subsequent use of this map.

Sources:
Land Use - CCRPC developed using consultant and Town of Bolton specifications - 2004.
Road Centerline - e911 road data - 2003.
Contours - derived from the 1:5000 Digital Elevation Model data.
Surface Waters - Vermont Hydrography Dataset - 2003.
FEMA FIRM - flood insurance rate maps interpreted and digitized by CCRPC - 1994.



Legend	
Zoning District	FEMA FIRM Floodplain
Village	100 year
Resort Residential	500 year
Resort Village	Contour Interval
Rural I	Road Centerline
Rural II	Railroad
Conservation	Stream Centerline
Forest	Water Body
1993 Tax Parcel Boundary	County Boundary
	Town Boundary

