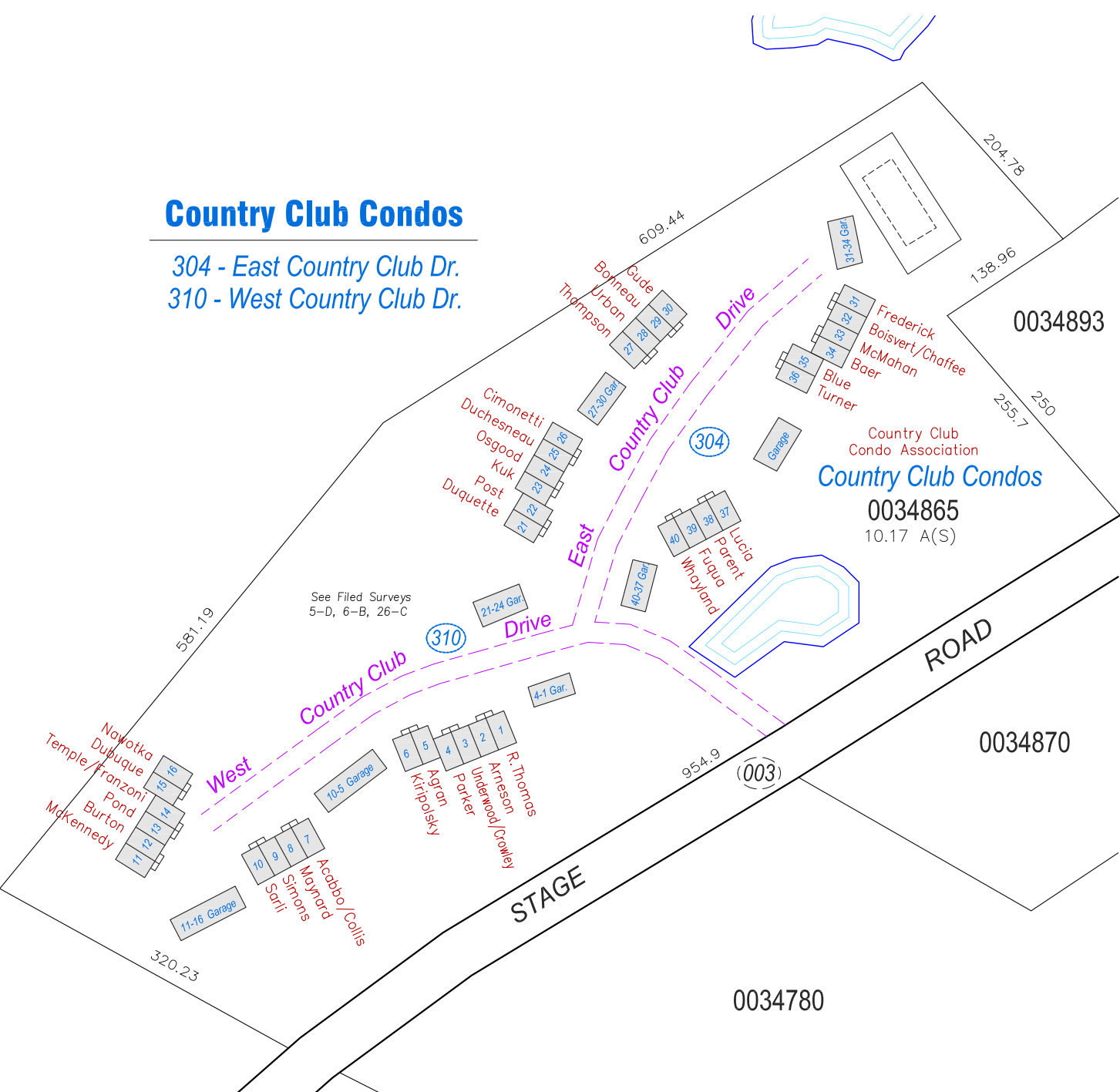


### Country Club Condos

304 - East Country Club Dr.  
310 - West Country Club Dr.

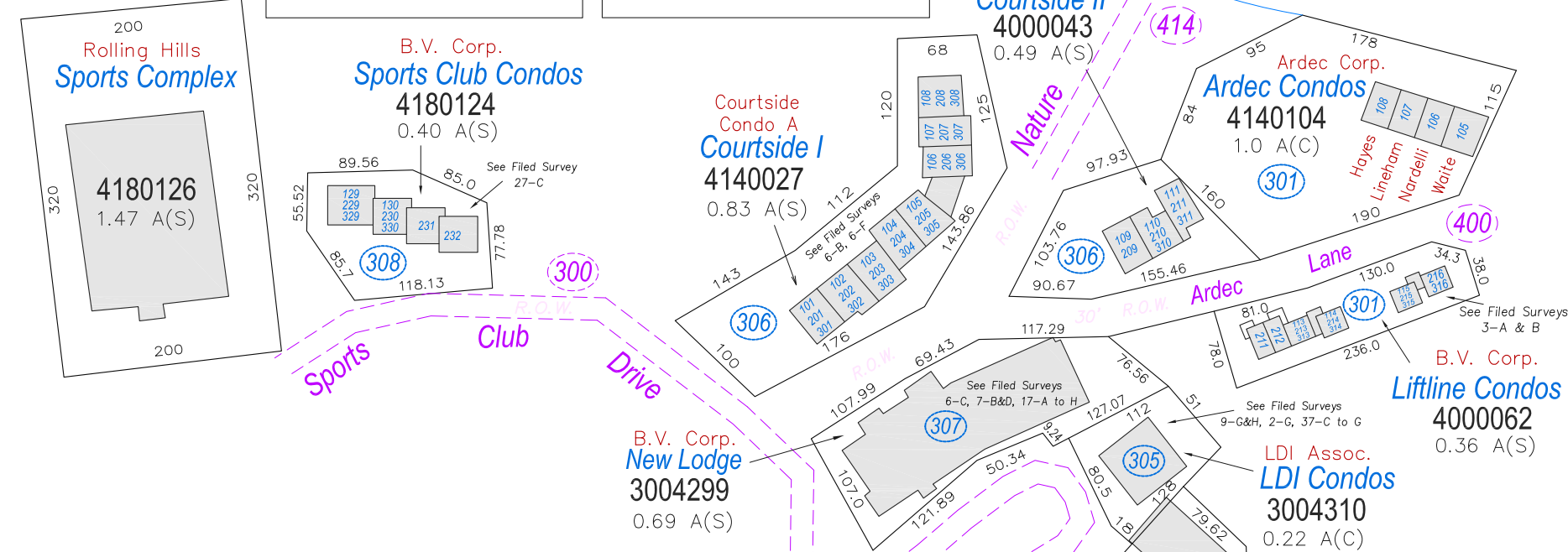


### 306 - Courtside Condos

UNIT	PAR. NO	OWNER
A 101	3060101	Vieira
A 102	3060102	Underwood
A 103	3060103	Heermans/Polansky
A 104	3060104	Tipple
A 105	3060105	Martz
A 106	3060106	Rodrick
A 107	3060107	Sugalski
A 108	3060108	Deslauriers
B 109	3060109	Raven's Wind LLC
B 110	3060110	Perkins
B 111	3060111	Bogar
A 201	3060201	Kenney/Low
A 202	3060202	Livernois
A 203	3060203	Huang/Zhang
A 204	3060204	Grechen
A 205	3060205	Hinsdale
A 206	3060206	Bohnsack
A 207	3060207	Stephen
A 208	3060208	Briere
B 209	3060209	Frazer
B 210	3060210	Noel
B 211	3060211	Floiz
A 301	3060301	Monte
A 302	3060302	Hoffman
A 303	3060303	Hebert/Cavert
A 304	3060304	Lipkovich/Dologanosova
A 305	3060305	Bansal
A 306	3060306	Parker
A 307	3060307	Ciechanowicz
A 308	3060308	Minerly
B 310	3060310	Coburn
B 311	3060311	Raven's Wind LLC

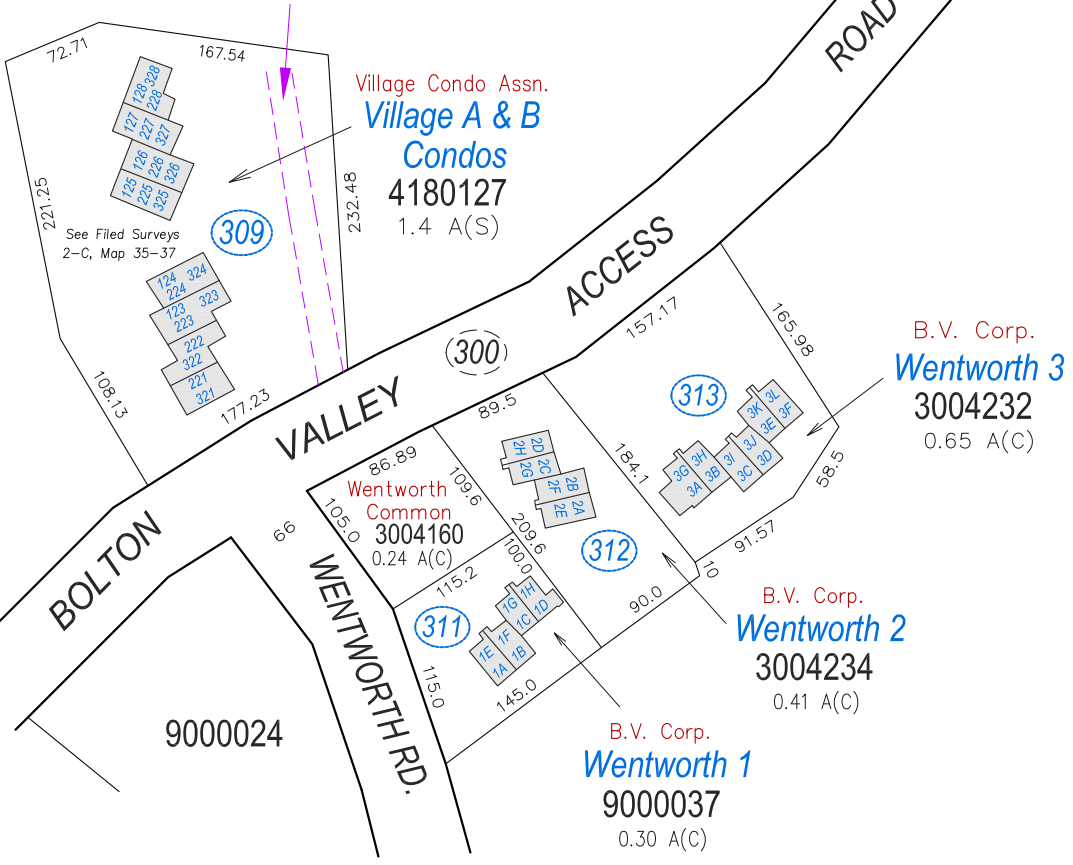
### 308 - Sports Club Condos

UNIT	PAR. NO	OWNER
129	3080129	ABS Group
130	3080130	Thompson
229	3080229	Anderman
230	3080230	Srinivasan
231	3080231	Vieira
232	3080232	Pollak/Evans
329	3080329	Belyea
330	3080330	Giger



### BOLTON VALLEY

Bolton Valley Holiday Resort



### 309 - Village A & B

UNIT	PAR. NO	OWNER
123	3090123	McLeod
124	3090124	Parot/Aggar
125	3090125	Titcomb
126	3090126	Auty
127	3090127	Ries
221	3090221	Ayer
222	3090222	Malloy
223	3090223	McGurman
224	3090224	Pesci
225	3090225	Nielsen
226	3090226	Donahue
227	3090227	Ries
228	3090228	McKenna/Gillis
321	3090321	Levesque
322	3090322	Pierce/Jamison
323	3090323	Bell
324	3090324	Angier
325	3090325	Kareivis
326	3090326	Rowlett/Akers
327	3090327	Bergeron/Lee
328	3090328	Brigham

### 311 - Wentworth 1

UNIT	PAR. NO	OWNER
1A	3110001	Deslauriers
1B	3110002	Riley
1C	3110003	Deslauriers
1D	3110004	Deslauriers
1E	3110005	Owens
1F	3110006	Deslauriers
1G	3110007	Deslauriers
1H	3110008	Deslauriers

### 313 - Wentworth 3

UNIT	PAR. NO	OWNER
3A	3130001	Ware
3B	3130002	Williams
3C	3130003	Ayer
3D	3130004	Zitomer/Dricker
3E	3130005	Aanonsen
3F	3130006	Driscoll
3G	3130007	Phillips
3H	3130008	Densham
3I	3130009	Etter
3J	3130010	Bacigalupi
3K	3130011	Palermo/Glindmyer
3L	3130012	Linehan

### 312 - Wentworth 2

UNIT	PAR. NO	OWNER
2A	3120001	Geroux/Petterborg
2B	3120002	Damon
2C	3120003	Burks
2D	3120004	Samson
2E	3120005	Radocy
2F	3120006	Parker
2G	3120007	Pitone/Coe
2H	3120008	Ayer

### 305 - LDI Condos

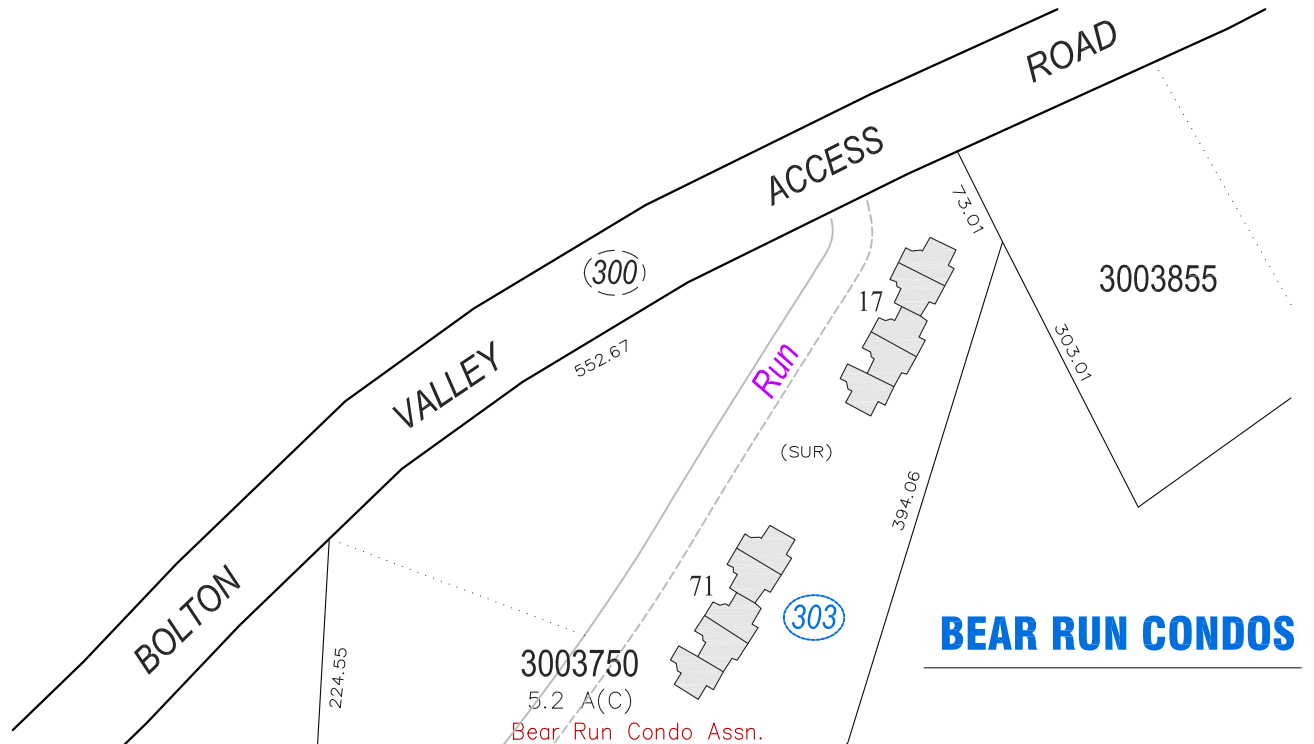
UNIT	PAR. NO	OWNER
2	3050002	Mtn. Operations
3	3050003	Mtn. Operations
101	3050101	Catamount
103	3050103	Catamount
105	3050105	McCaslin
107	3050107	Murphy
218-220	3050218	Mtn. Operations
219	3050219	Allen
221	3050221	Catamount
222	3050222	Catamount
223-225	3050223	McGorry
224	3050224	Kambe
318	3050318	Nedde/Williams
319	3050319	Courcy
320	3050320	Nedde/Williams
321	3050321	Austin
322	3050322	Nedde/Williams
323	3050323	M. Nixon
324	3050324	Nedde/Williams
325	3050325	Ferris

### 301 - Liftline Condos

UNIT	PAR. NO	OWNER
112	3010112	Mtn. Operations
113	3010113	Anderson
114	3010114	Charpentier
115	3010115	JKW Assoc., LLC
212	3010212	Pabst
213	3010213	Labrie/Anderson
214	3010214	Kelliher
215	3010215	Barlow
216	3010216	Villeneuve
313	3010313	Villeneuve
314	3010314	Villeneuve
315	3010315	Stanton
316	3010316	Villeneuve

### 307 - New Lodge Condos

UNIT	PAR. NO	OWNER
Restaurant	3070000	Mountain Operations
176	3071764	Bolton Inv, LLC
178-180	3071784	Bolton Inv, LLC
182	3071821	Eigen/Wexler
	3071822	Eigen/Wexler
	3071823	Eigan/Wexler
	3071824	VanValkenburgh
188-190-192	3071882	Bolton Inv, LLC
270-271	3072700	Bolton Inv, LLC
272	3072720	Williams
274-276	3072740	Bolton Inv, LLC
275-277	3072754	Whipple
278	3072780	Ambrosio
279	3072793	Bolton Inv, LLC
282	3072820	Nedde/Williams
283-285	3072833	Bolton Inv., LLC
284-286	3072841	Mehta/Goldstein
287	3072870	Nedde/Tappan
288-290-292	3072880	Bolton Inv, LLC
293-294	3072930	Camel's Humb Acreage
295	3072950	Smith
296	3072960	Stano
297	3072970	Fonte
370-371	3073700	Bolton Inv, LLC
372-373	3073720	Rooney
374-376	3073740	Bolton Inv, LLC
375	3073750	Ly
378	3073780	Belanger
379-381	3073790	Bolton Inv, LLC
382	3073820	Gouse
383-385	3073830	Walfish
384-386	3073842	Chamberlain
387-389	3073870	Choate
388-390-392	3073880	Bolton Inv, LLC
393-394	3073930	Bolton Inv, LLC
395	3073950	Massie
396	3073960	Bevins
397	3073970	Bianco



### 303 - Bear Run Condos

UNIT	PAR. NO	OWNER
17 BEAR RUN		
UNIT 1	3030100	Emrich
UNIT 2	3030200	Ferlazzo
UNIT 3	3030300	Andreolletti
UNIT 4	3030401	Spaulding
UNIT 5	3030501	Deslauriers
71 BEAR RUN		
UNIT 11	3031100	Kambe
UNIT 12	3031200	Lighthart
UNIT 13	3031300	O'Connor/Ducharme
UNIT 14	3031400	Drinkwater
UNIT 15	3031503	Vannucci/Lamothe
115 BEAR RUN		
UNIT 16	3031600	Townsend
UNIT 17	3031700	Deslauriers
UNIT 18	3031801	Connolly/Boucher
UNIT 19	3031803	Kelly
UNIT 20	3032003	Chase